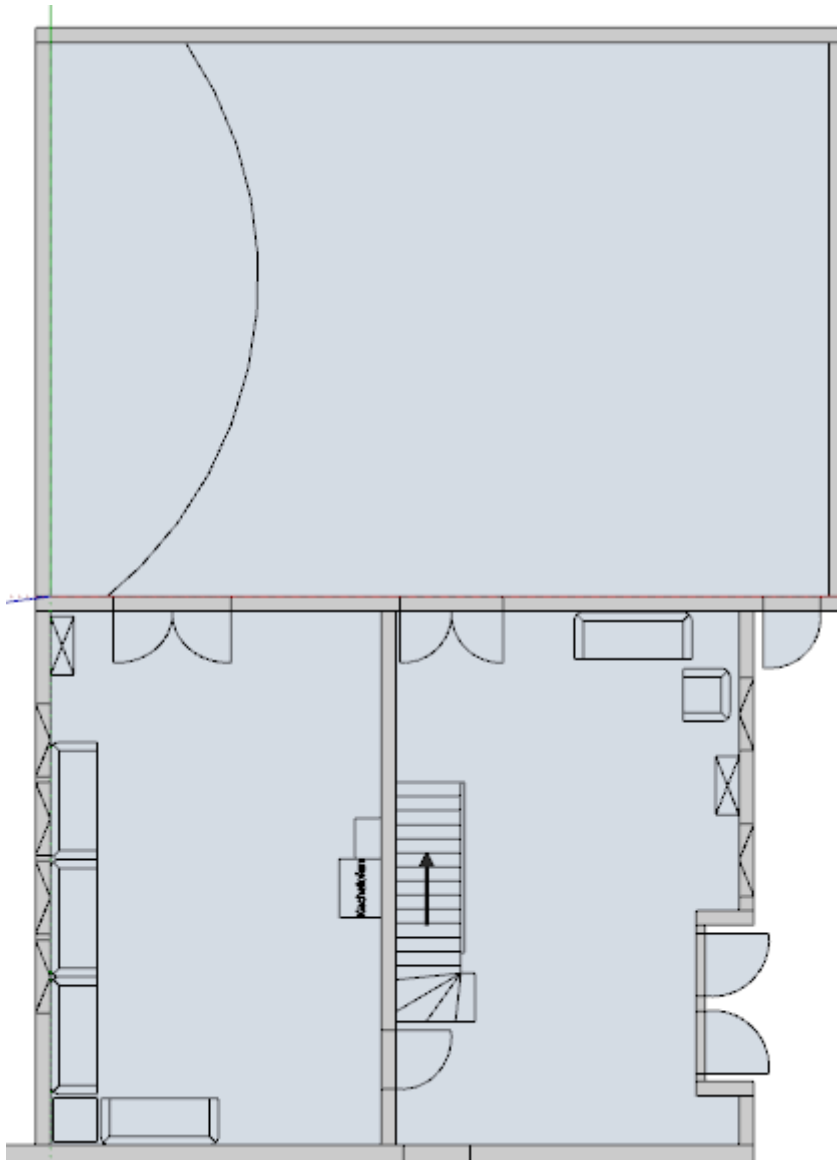
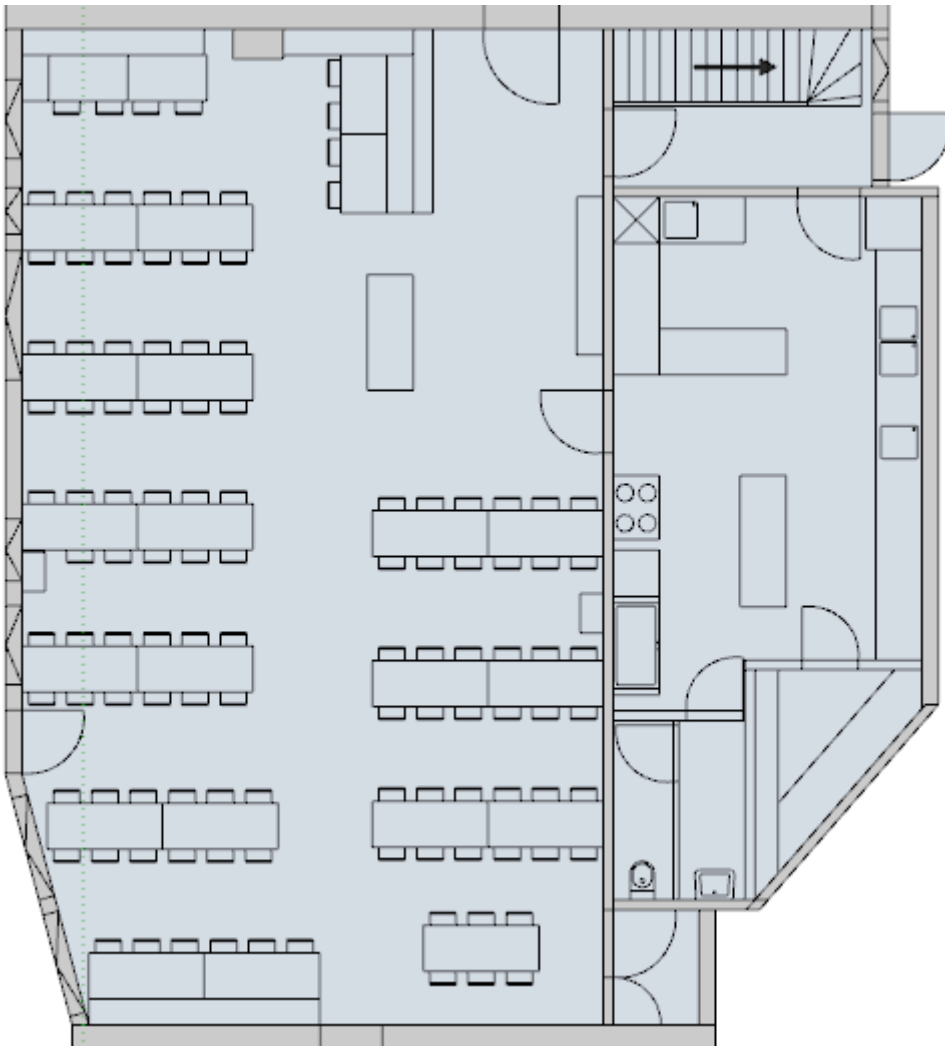


Modul V1: Versammlungssaal, Gruppenraum, Foyer

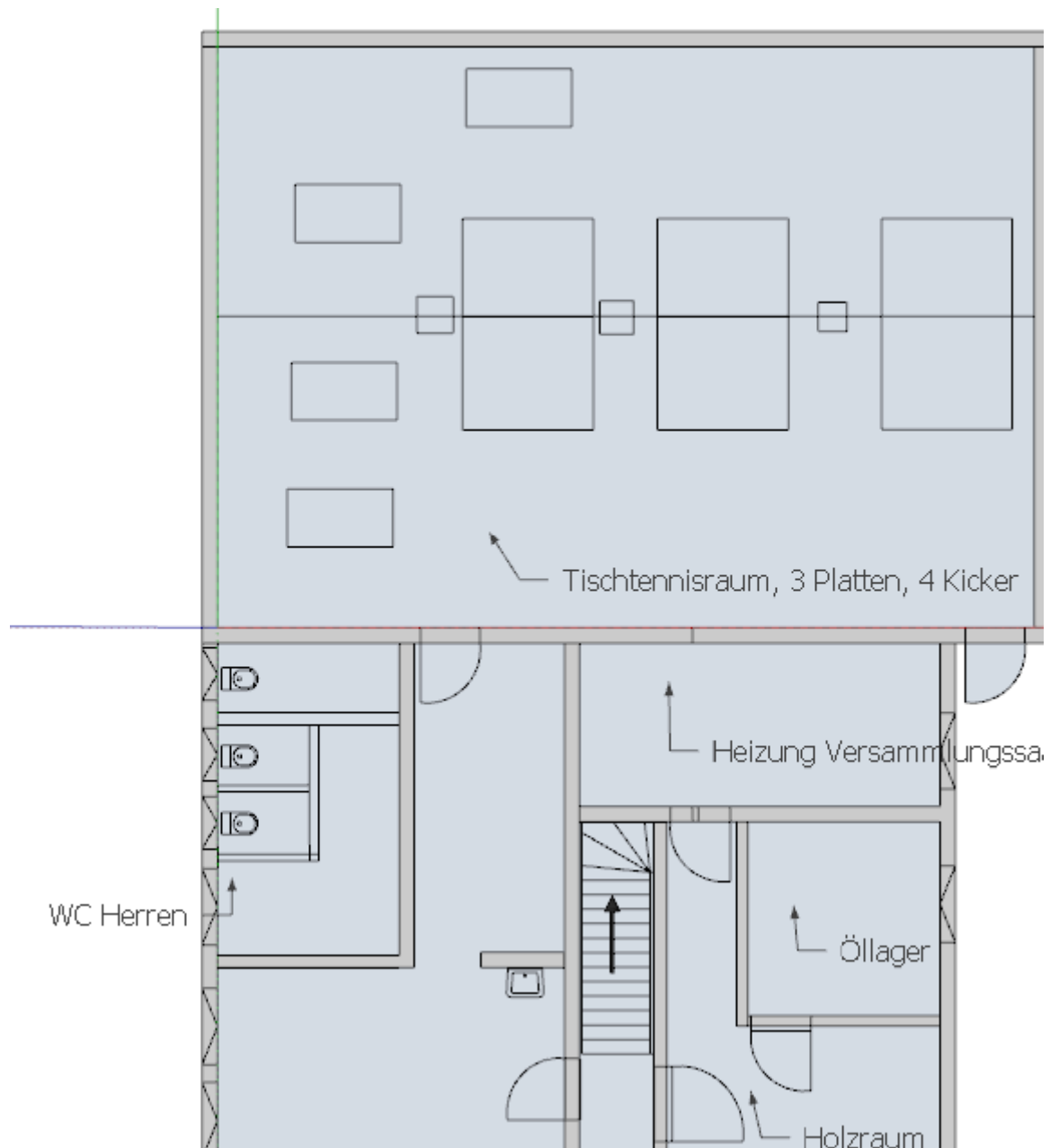


Modul V2: Speisesaal, Großküche



Modul V3: MatthäusHaus UG

Tischtennisraum, Tischkicker – liegt unterm Versammlungssaal

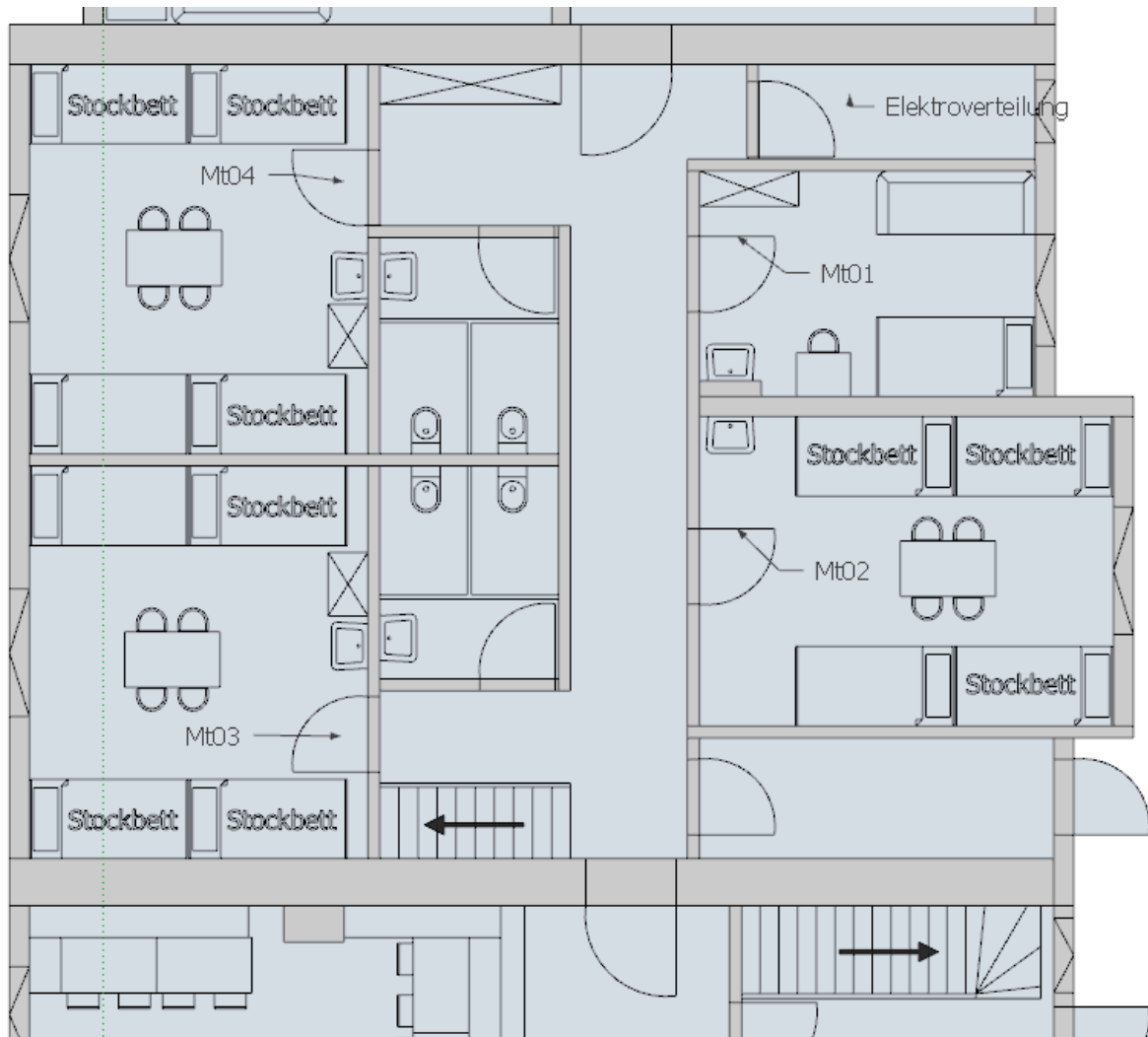


Modul V4: MatthäusHaus UG

Billardraum, Dart

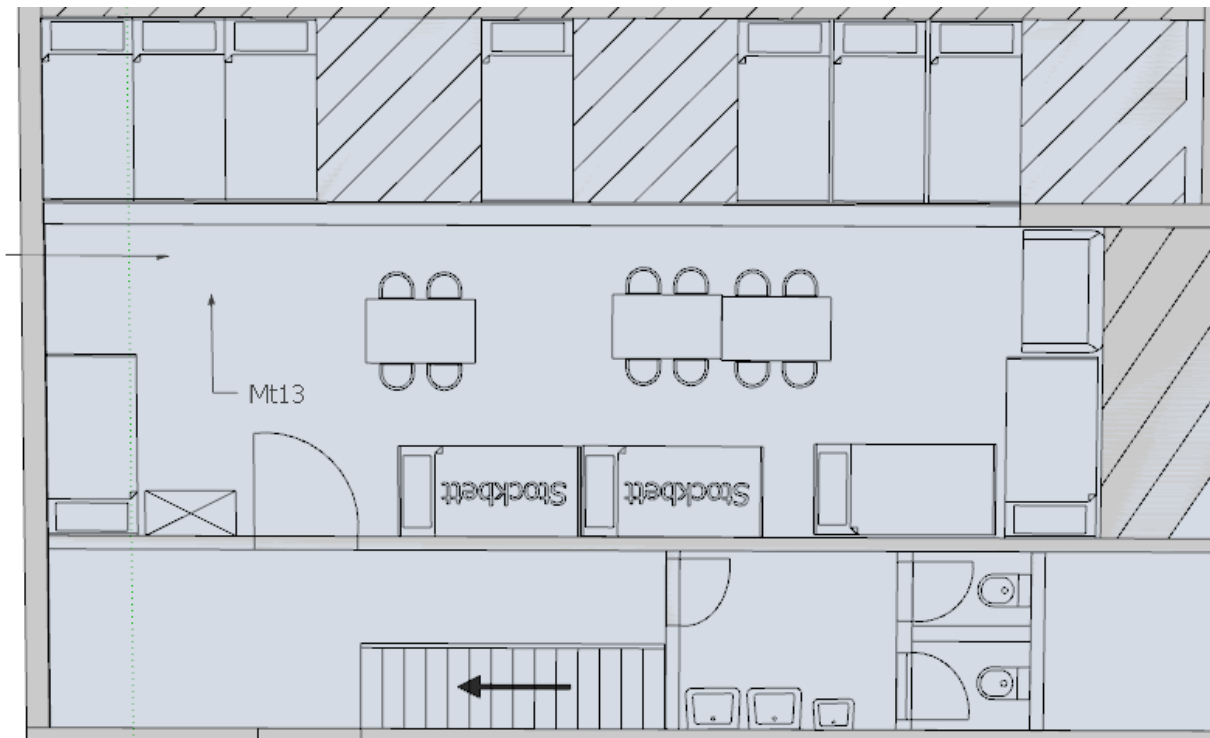


Modul Ü1: MatthäusHaus EG, Zimmer Mt01-Mt04, 3x7 Betten, 1x 1+1Betten



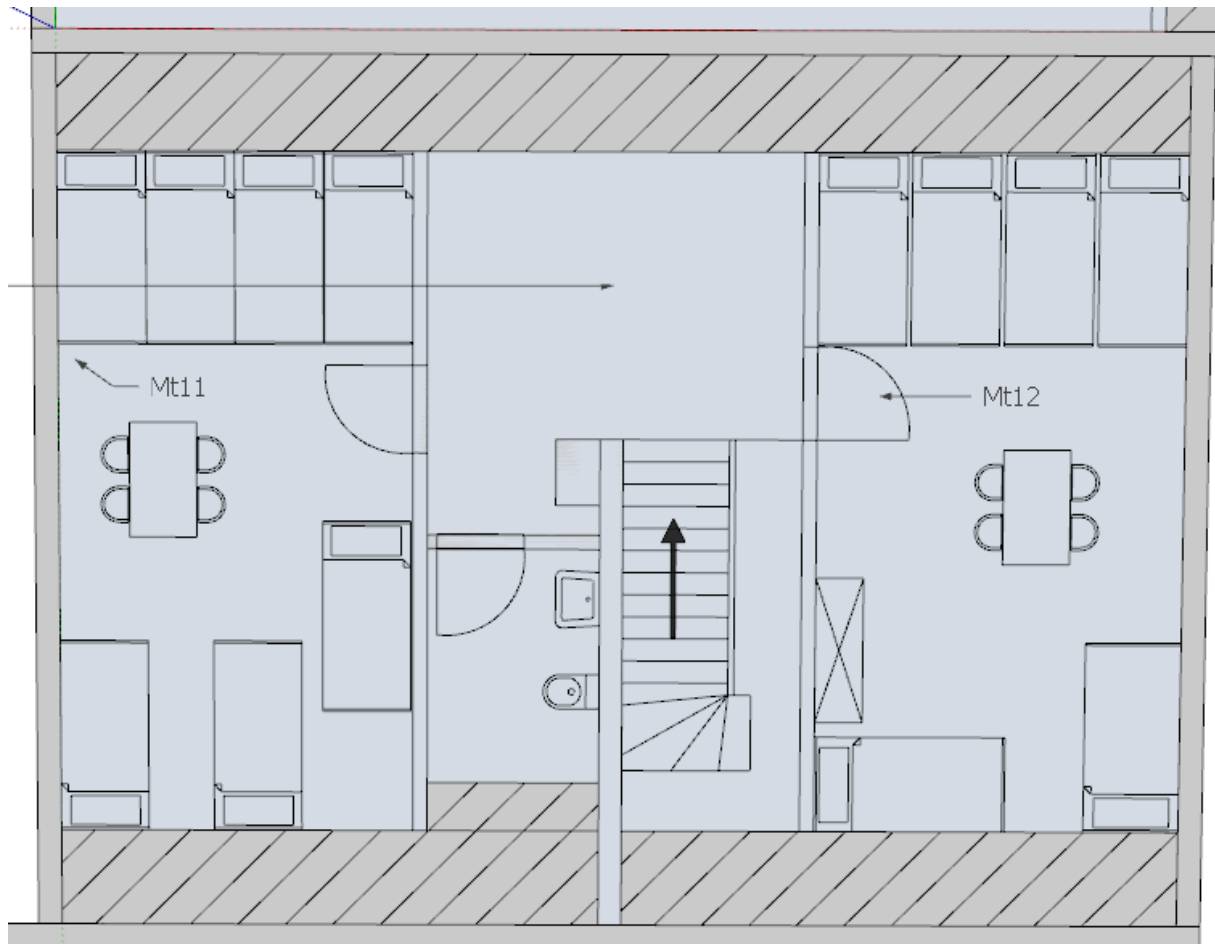
Modul Ü2: MatthäusHaus OG

1 Zimmer, 14 Betten, 2 WC



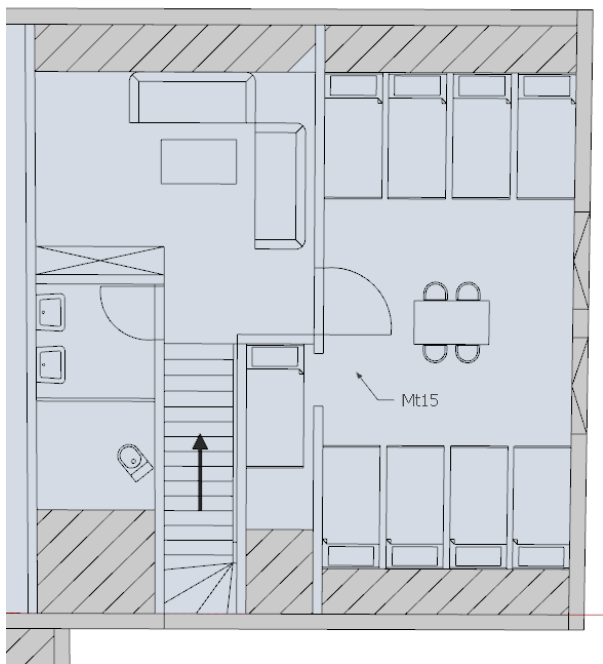
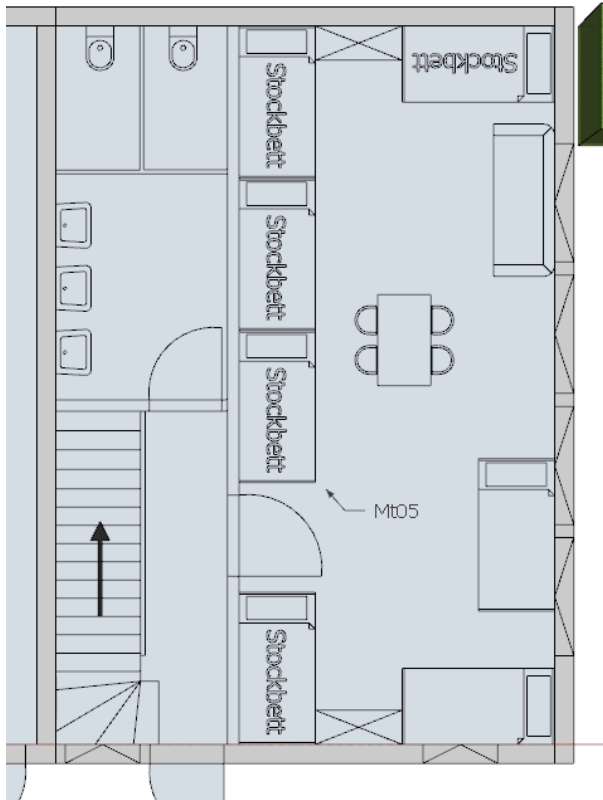
Modul Ü3: MatthäusHaus OG

2 Zimmer, 13 Betten, WC



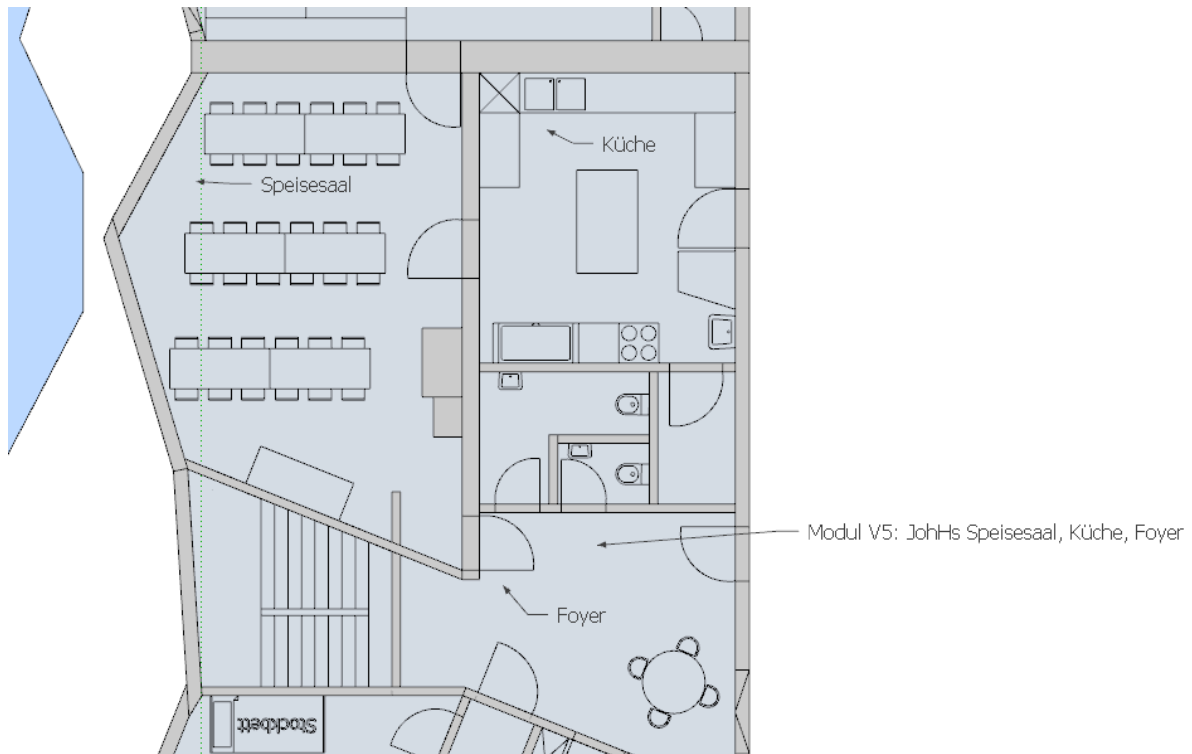
Modul Ü4: MatthäusHaus Mt05 + Mt15

2 Zimmer, 12 +9 Betten, 3 WC



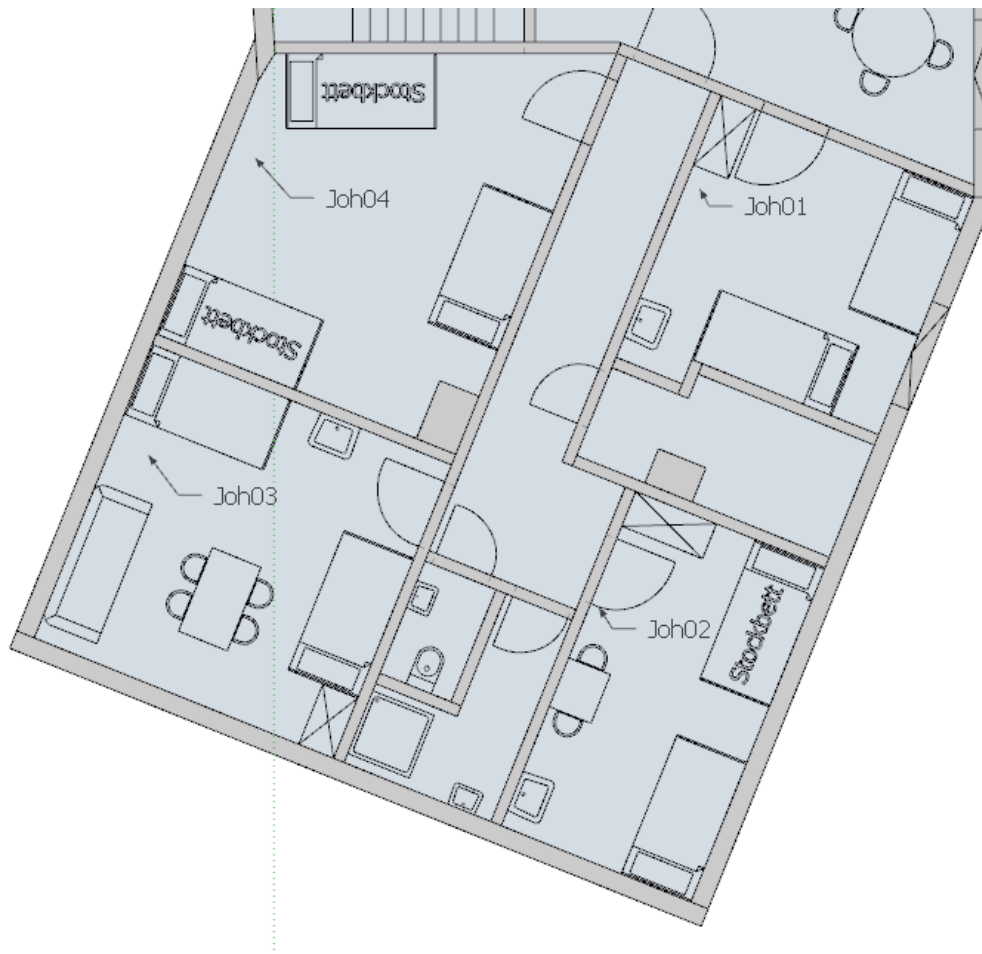
Modul V5: JohannesHaus EG

Speisesaal, Küche, Foyer, 2 WC



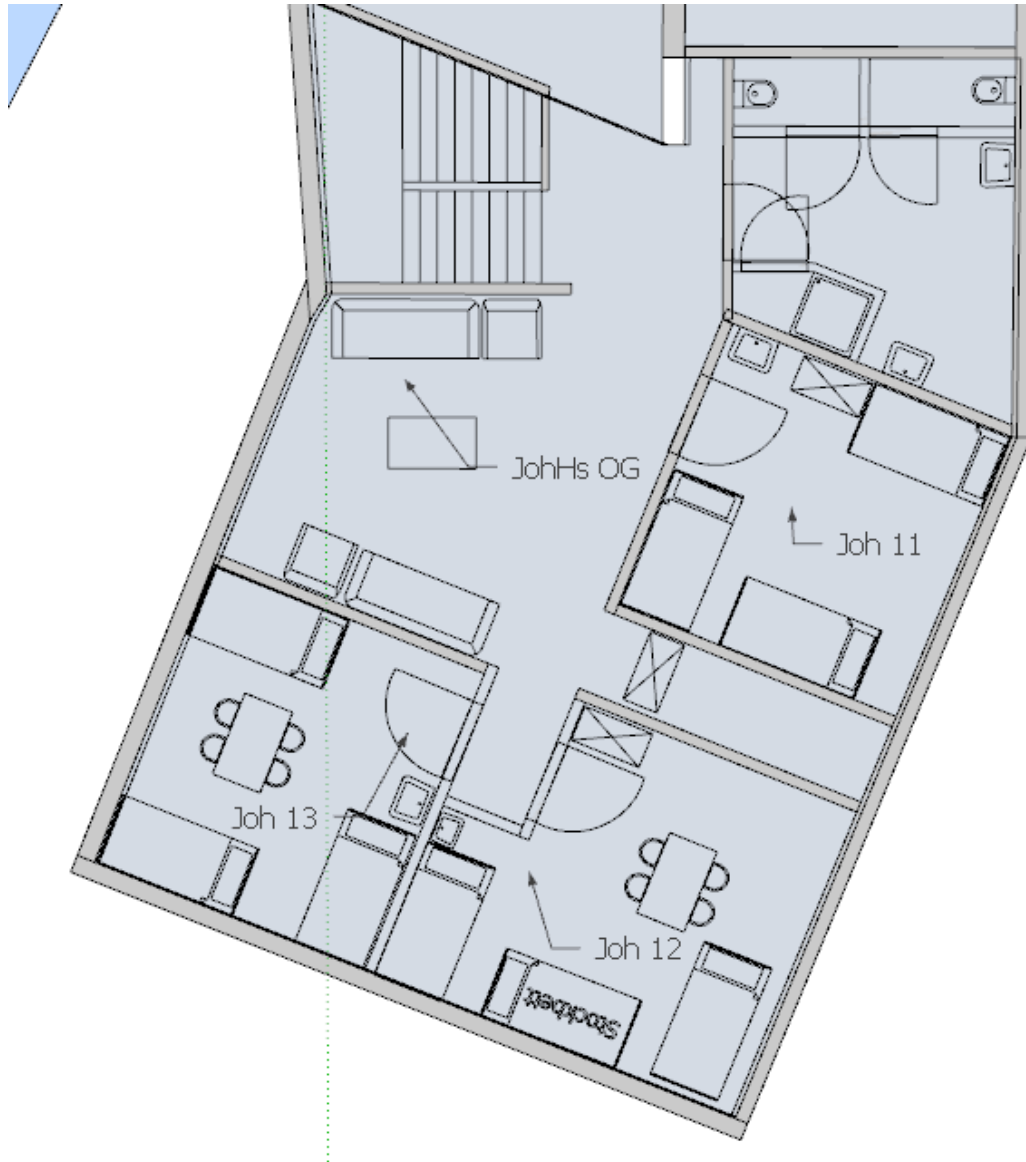
Modul Ü5: JohannesHaus EG

4 Zimmer, 12+1 Betten, Dusche, WC



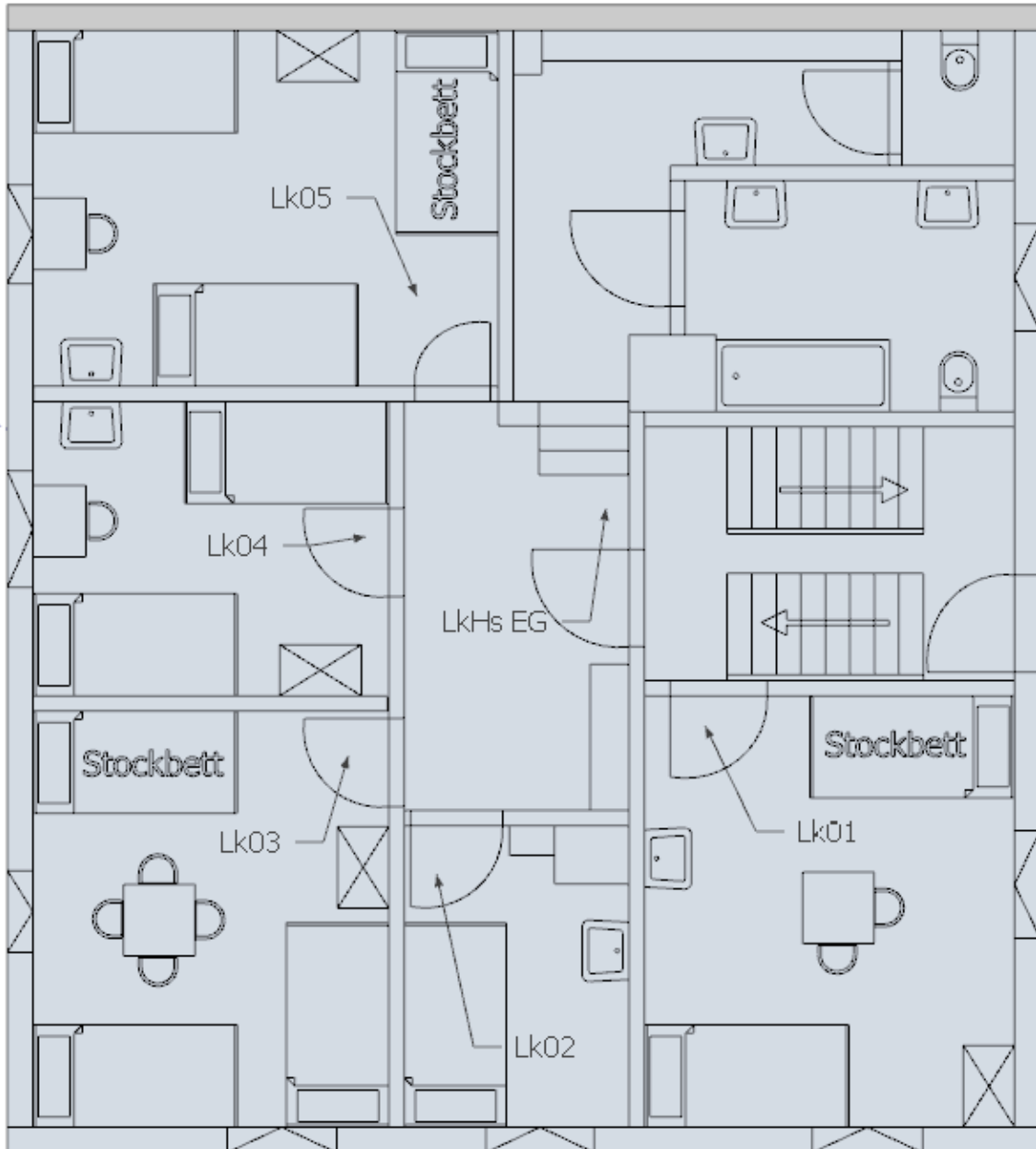
Modul Ü6: JohannesHaus OG

3 Zimmer, 10 Betten, Dusche, 2 WC



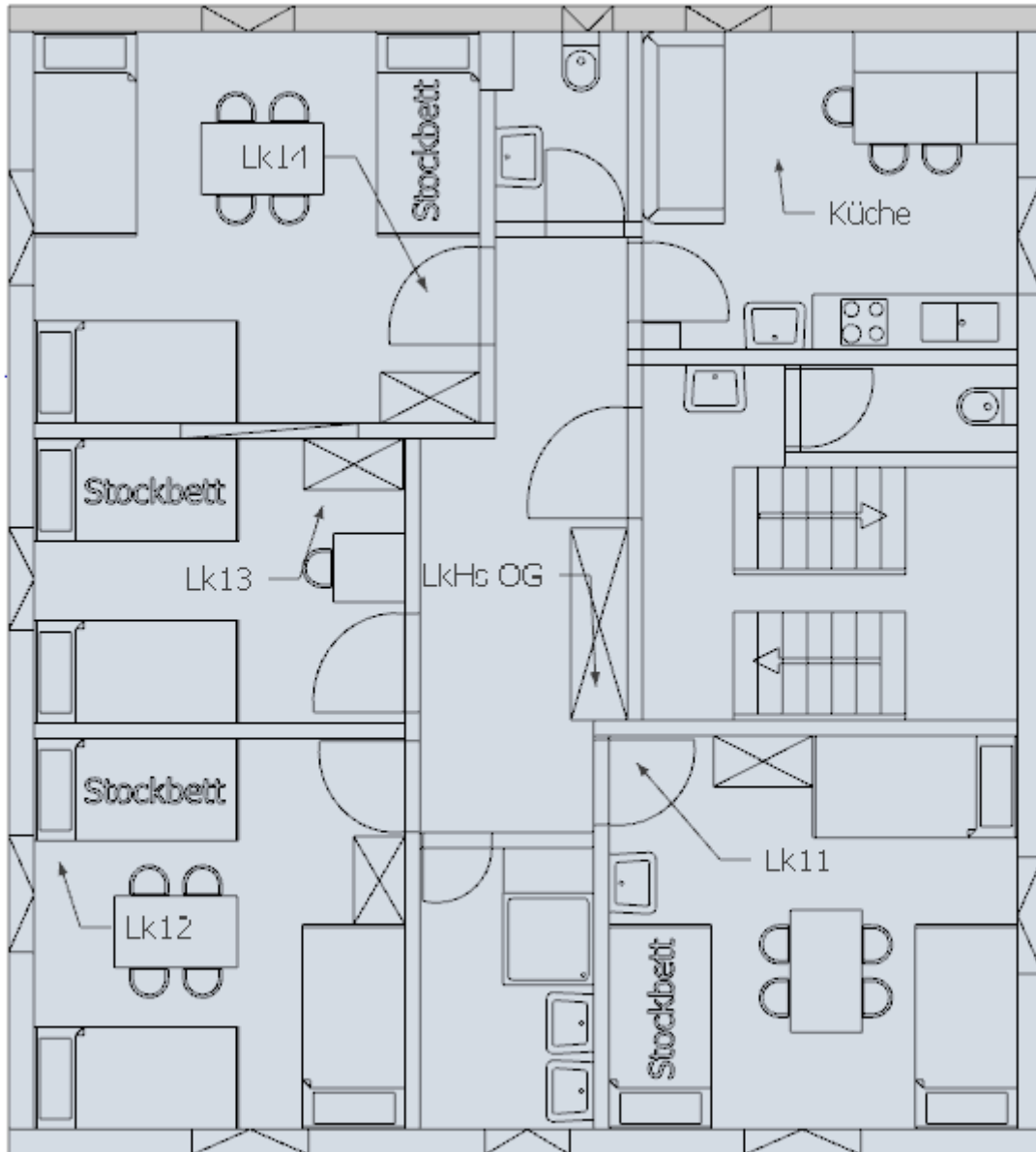
Modul Ü7: LukasHaus EG

5 Zimmer, 14 Betten, WC, Bad mit WC,



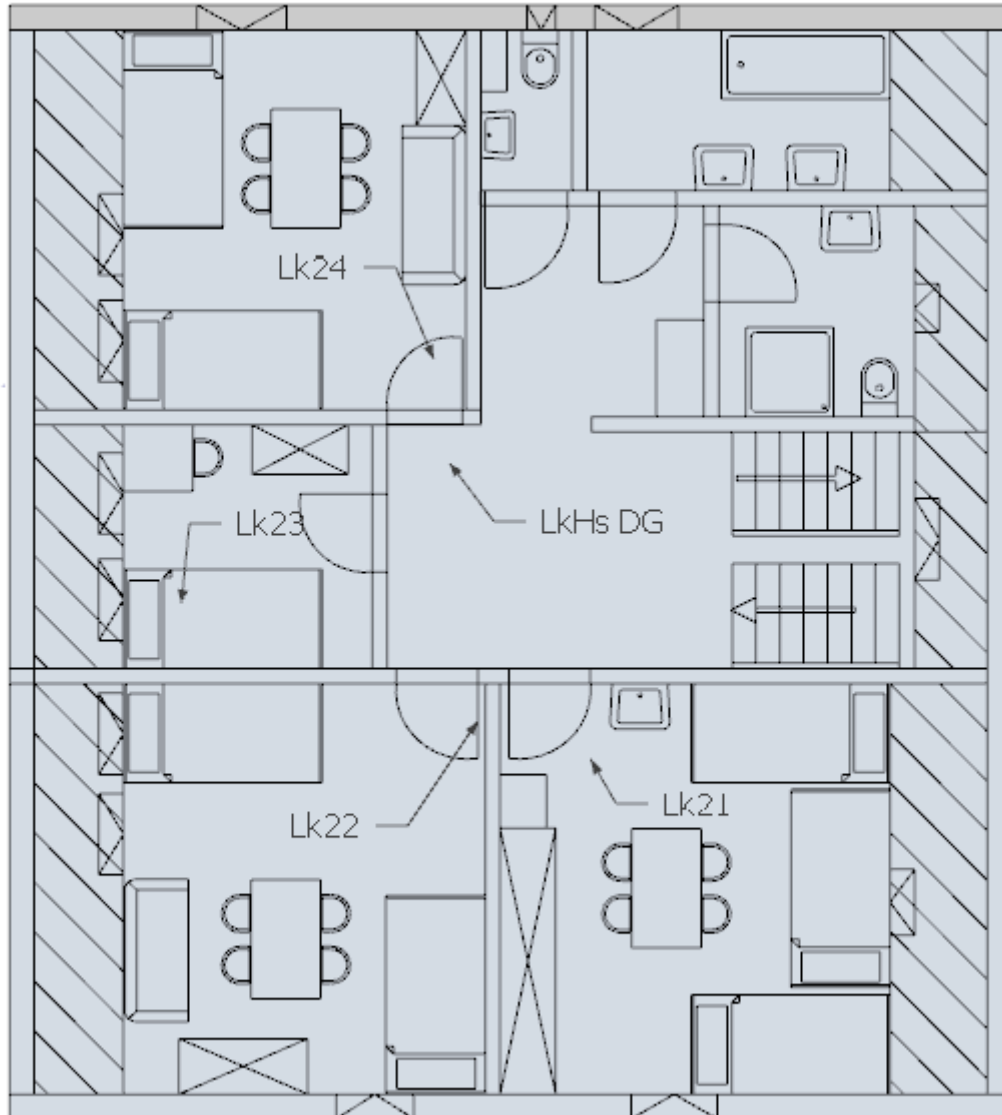
Modul Ü8: LukasHaus OG

4 Zimmer, 15 Betten, 2 WC, Küche, Dusche



Modul Ü9: LukasHaus DG

4 Zimmer, 8 Betten, WC, Bad, Dusche mit WC



Modul Ü10: Häusle OG

FeWo für 2 Personen, 38 m²

